

Graco Pulse® Level offers highly intuitive tank-level-visibility options to help you optimize deliveries, margins and customer service. Choose from multiple tank-level-monitoring technologies, including a system that can run entirely on Wi-Fi. Track tank levels, capture and apply data, and assign distribution routes quickly, accurately and confidently from the industry's leading fluid management expert.



Choose Your Pulse Level System:



25T460

Ultrasonic Wi-Fi

There are other TLM solutions on the market – but none of them are designed for Wi-Fi configuration. When connected to a reliable network, marketers and their customers can avoid service fees or contracts entirely.



25T461

Ultrasonic Cellular

No need to worry about obsolete cellular network, we use a long term data solution. Versatile multi-thread adapter allows for installation on all different tank types.



25T462

Pressure Cellular

No need to worry about obsolete cellular network, we use a long term data solution. Our pressure unit is approved for hazardous locations and measures tanks up to 30 feet tall.

Typical Fluids Handled

- Petroleum- and synthetic-based oils (motor, gear and ATF)
- Fuel (diesel/gasoline/kerosene)
- Water/waste water
- Antifreeze
- Windshield washer fluid
- Waste oil
- DEF

Typical Applications

- Heavy-duty truck dealers
- Fleet maintenance
- Mining maintenance
- Public works garage
- Construction vehicle maintenance
- Heavy-duty mobile service trucks
- Mining
- Remote job sites

| Part Number | 25T460 | 25T461 | 25T462 |
|--|--------|--------|--------|
| No Monthly Fees | • | | |
| No Maintenance Contract | • | • | • |
| Easy-to-Use Software for Monitoring Data | • | • | • |
| Easily Replaceable Batteries | • | • | • |
| NPT Thread for Easy Installation | • | • | • |
| Viewable Data with Other Models of Pulse Level | • | • | • |
| LTE Cellular Coverage | | • | • |
| Works in Remote Locations | | • | • |
| 30 ft Tanks | | | • |
| Hazardous Environment Approved | | | • |

Ultrasonic Wi-Fi



No Ongoing Fees

Wi-Fi connection.

Long Battery Life

7-year battery life with replaceable C batteries.

On-Demand Reading

Ability to take reading at any time.

Ultrasonic Sensor

Measure tanks 10 ft tall.

Ultrasonic Cellular



Cellular Communication

No need for local network connection.

Long Battery Life

5-year battery life with replaceable C batteries.

On-Demand Reading

Ability to take reading at any time.

Ultrasonic Sensor

Measure tanks 13 ft tall.

Pressure Cellular



Cellular Communication

No need for local network connection.

Long Battery Life

Up to 10-year battery life.

Submersible Pressure Sensor

Measure tanks up to 30 ft tall.

Hazardous-Location Rating

Approved for use with flammable fluids such as gasoline.



Technical Specifications

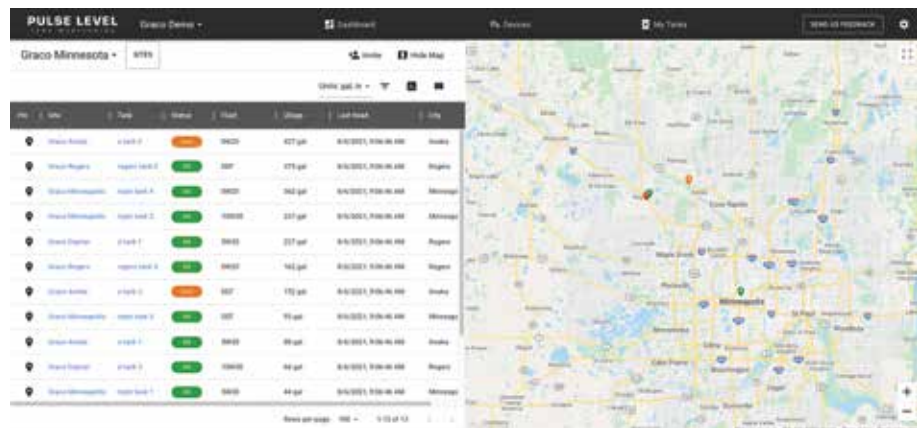
| | Ultrasonic Wi-Fi TLM | Ultrasonic Cellular TLM | Pressure Cellular TLM |
|-------------------------------------|---|---|---|
| Compatible Fluids | Oil, kerosene, diesel, lubricants, additives, DEF/AdBlue, coolants, water, waste oil, waste water | Oil, kerosene, diesel, lubricants, additives, DEF/AdBlue, coolants, water, waste oil, waste water | Oil, kerosene, diesel, lubricants, additives, DEF/AdBlue, coolants, water, waste oil, waste water, gasoline |
| Tank Depth Measurement Range | 5.0 in to 9 ft-7 in | 5.0 in to 13 ft | 30 ft |
| Fluid Level Measurement Accuracy | +/- 1.0 in | +/- 1.0 in | +/- 1.0 in |
| Mounting | 1.25 in, 1.5 in and 2.0 in threaded NPT connector | 1.25 in, 1.5 in and 2.0 in threaded NPT connector | 1 in threaded NPT connector with wall-mounted logger |
| Clearance Height Above Tank for TLM | 7.5 in | 7.5 in | N/A |
| Weight | 0.5 lb | 1.17 lb with batteries | 0.75 lb |
| RF Frequency Band | 2.412 GHz - 2.462 GHz | LTE CAT-M1 | LTE CAT-M1 |
| Maximum RF Transmit Power | 18 dBm | 23 dBm | 23 dBm |
| Operating Temperature Range | 0°F to 122°F | 0°F to 122°F | -4°F to 131°F |
| Batteries | Li-SOC12 Size R14, 3.6V C-cell | 4 x Alkaline C-cell | Graco Part Number 19D216 |
| Battery Life | 7.5 years* from activation | 5 years* | 10 years* from activation |
| Enclosure (Ingress Protection) | IP67 | IP67 | IP68 |
| Tanks | | | |
| Maximum Volume | 999,999 gallons | 999,999 gallons | 999,999 gallons |
| Maximum Height | 9 ft-7 in | 13 ft | 30 ft |
| Altitude | <6,000 ft | <6,000 ft | <6,000 ft |

*The battery life is based upon four (4) measurements per day and one (1) data drop per day from a location with adequate coverage, and a normal distribution over the operating temperature range centered at +25°C (77°F).

Pulse Level Software

Pulse Level software has a simple intuitive design and gives you powerful information at your fingertips. Get a quick consolidated view of key sites via a specifically designed web page. Track tank levels at a glance, generate customizable reports and automated email alerts, and share critical information with other key decision makers.

- Intuitive alerts ensure your customers never run out of products
- See the status of each customer site on an easy-to-view map
- Advanced reporting – create and schedule automated reports to track history and see usage trends
- Expand the capabilities of your existing software systems with tank data from Pulse Level's API
- Simple annual and monthly billing options, or avoid charges altogether with Wi-Fi
- Allow customer to find insights on their own tanks by sharing Pulse Level data
- Use customers' existing Pulse Pro hardware to avoid the cost of additional monitors





Ordering Information

In-Line Meters

| Part Number | Description |
|-------------|--|
| 236763 | Electronic pulse output meter (quarts) |
| 236764 | Electronic pulse output meter (liters) |
| 215474 | Mechanical pulse output meter (quarts) |
| 244342 | Meter pulse converter, used when upgrading old-style modular fluid commander to electronic allows use of 215474/215475 with the EFC. |

Air Solenoid Valves

| Part Number | Description |
|-------------|--|
| 215407 | Air solenoid valve, 150 psi (10 bar) (1/2 npsm (f) conduit ports for wiring; 1/4 in NPT(F) air ports, adapted to 3/8 (f) IN, 3/8 (m) OUT) operates on 24V DC and 110 VAC. Automatically shuts-off air inlet to pump when pre-set dispensed amount is reached. Materials of construction: brass, SST, Buna. |
| 105474 | Air solenoid valve (bare) 150 psi (10 bar), same as 215407 but without wire connectors or adapters. 1/2 in npsm (f) conduit ports for wiring; 1/4 in NPT(F) air ports. 150 psi (10.3 bar) max. working pressure. |

Fluid Solenoid Valves

| Part Number | Description |
|-------------|---|
| 215487 | Fluid solenoid valve, 1/2 in NPT(F) 3,000 psi (207 bar) operates on 24V DC. Automatically shuts-off fluid when pre-set dispensed amount is reached. Includes tube, valve, pin connector, wire plug connector and adapter. |
| 514150 | Fluid solenoid valve for antifreeze, 150 psi max. (10 bar), 1/2 in NPT(F), same as features as 215487. |
| 110025 | Bare fluid solenoid valve, 1/2 in NPT(F) 3,000 psi, same features as 215487 above, but without wiring connectors or adapters. |

Ready-Light Kits

| Part Number | Description |
|-------------|--|
| 218588 | Ready-light kit, signals operator when dispensing can begin. Includes "ready to dispense" indicator light (239019), strainer (240417), fluid solenoid valve (215487) and hardware. |
| 238996 | Ready-light with junction box (no solenoid or strainer) |
| 239019 | Ready-to-dispense indicator light only |
| 113859 | Lamp for indicator only |

Installation Components

| Part Number | Description |
|-------------|--|
| 111620 | Check valve |
| 223179 | Fluid filter kit (for bare electronic meter) |
| 186472 | Wall-mounting bracket |
| 108458 | Fluid shut-off valve |
| 237893 | Thermal relief kit for 900 psi (62 bar), relieves excess heat-induced pressure from dispense system. Male and female ends allow for simple installation. |

Connecting Cables for Connecting Solenoids and Consoles, 90-volt, 2-wire, 18-gauge

| Part Number | Description |
|-------------|--|
| 215481 | 100 ft (30.5 m) pre-connected at both ends |